

# Seeing Paradise through Clouds: Generating Annual Cloud-free Mosaics from Landsat-8 Imagery

Master's Student: Yoko Uyehara, Mentor: Dr. Qi Chen / University of Hawai'i at Mānoa

## Paradise in Cloud Cover

- Landsat 8 (2013 – 2020)
- No cloud-free images
- 1 image with <5% cloud coverage
- Islands face environmental stresses
  - Volcano eruption
  - Urban expansion
  - Agricultural abandonment
  - Coastal line changes
  - Forest losses
  - Forest restoration
- Cloud-free mosaic: Latest is 2007

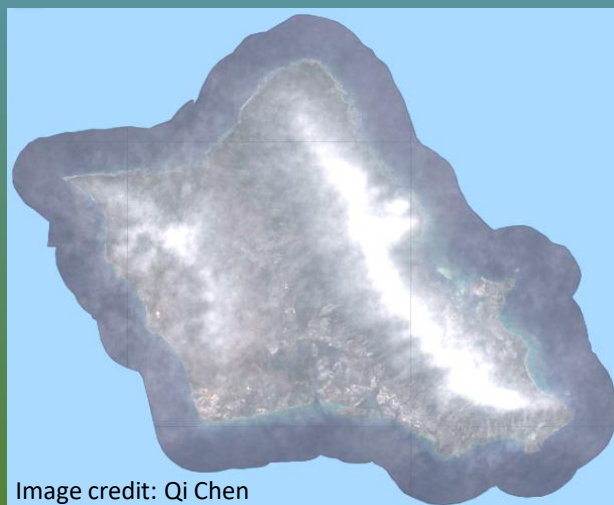


Image credit: Qi Chen

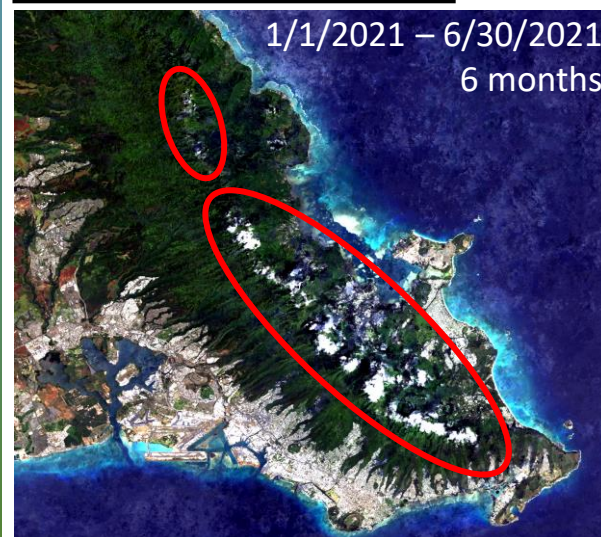
## Methods

- Evaluated Cloud-free mosaic methods
  - Descartes Labs
    - Requires fees
    - Only Red-Green-Blue bands
  - Google Earth Engine (GEE)
    - No fees
    - All bands
  - Other methods
- Parameters setting
  - Time range, Cloud Score, etc.

## GEE Process Flow

1. Get data  
Landsat 8 data
2. Filter data  
Location boundary
3. Cloud-free algorithm  
Parameters: time, cloud score, etc.
4. Cloud-free mosaic  
Full spectral bands

## Results/Discussions: **Time range is the most important**



## Agricultural Land Change (Maui)

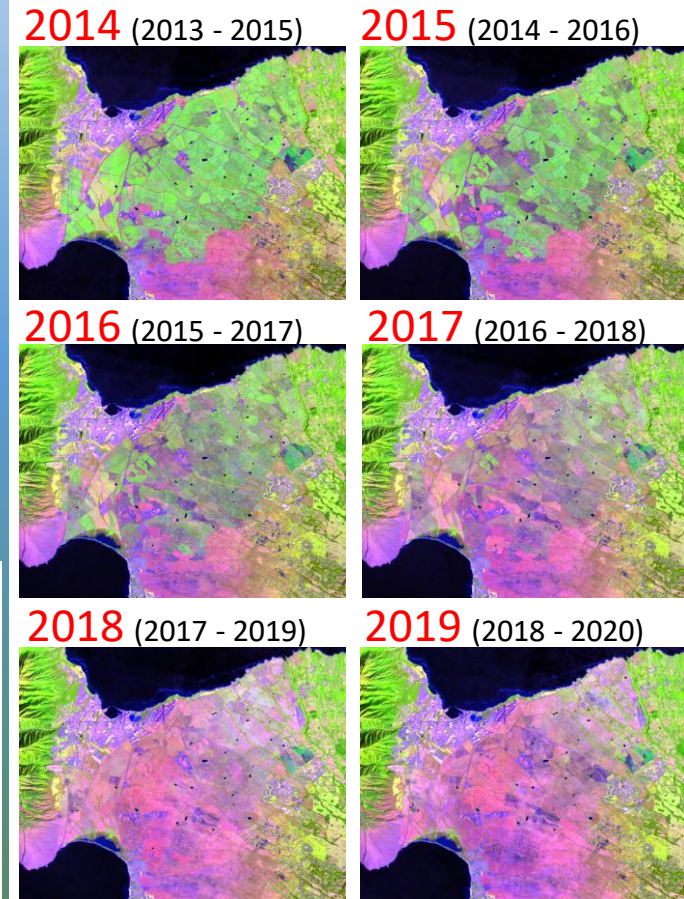


Image credit: Qi Chen

## Free to download the data

- Ready to use for GIS analysis
- Come with full spectral bands
- Visit us at <http://hawiiview.org>